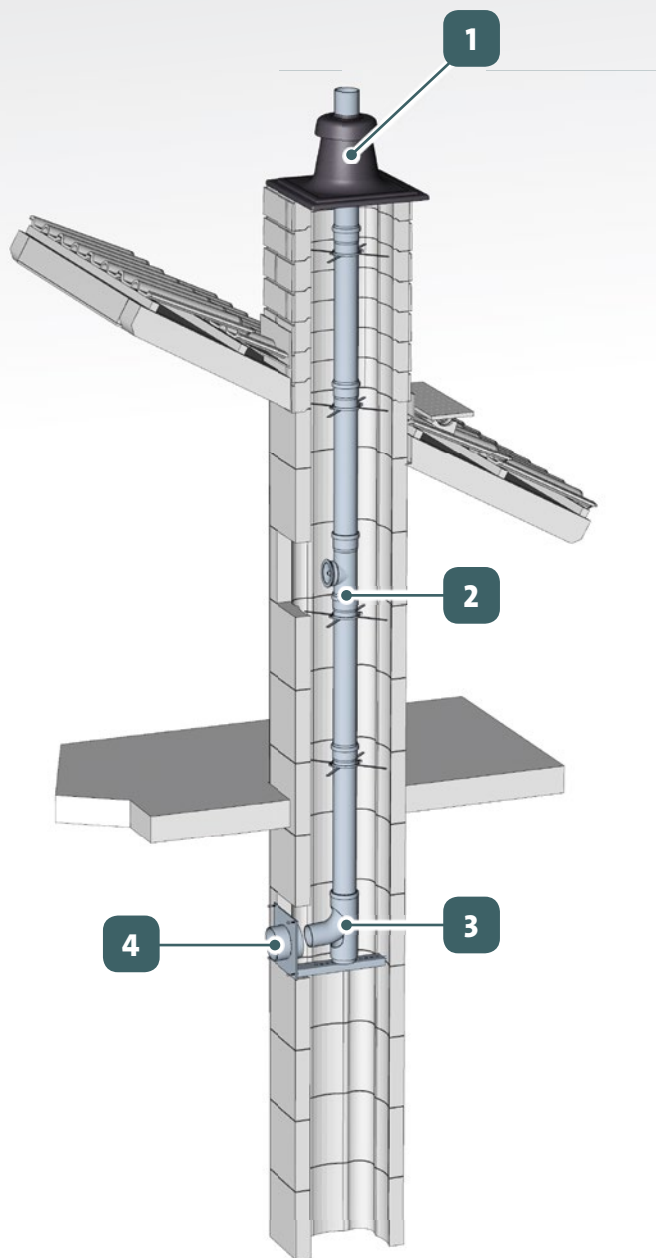


Flues and chimney systems

Complete systems overview

Chimney systems rigid | single-wall



Description

- The PP rigid ducts are suitable for condensing gas and oil boilers with a maximum flue temperature of 120°C.
- Several terminals are at hand and depending on the model available in black, terracotta or INOX.
- Plastic flue pipes expand and shrink more than metal pipes as result of temperature variations. It is important that the flue pipe can move up and downwards in the terminal.
- In general there are two ways of installation: the combustion air is taken from the chimney or it is taken from somewhere else. In that case the chimney is just ventilated.

1

Terminals
→ page 10

2

In the chimney
→ page 10

3

System support
→ page 11

4

Boiler connection materials
→ page 52 for concentric materials
→ page 54 for single-wall materials

Technical details

CE marking	EN14471 T120 H1
Temperature class	T120
Seals	Mostly in EPDM for flue pipe connections
Pressure class of the system	H1 (5.000 Pa)
Available diameters [mm]	60, 80, 110, 125, 160, 200, 250, 315
Installation types	C9, C5, C5x, C4, B3, B2

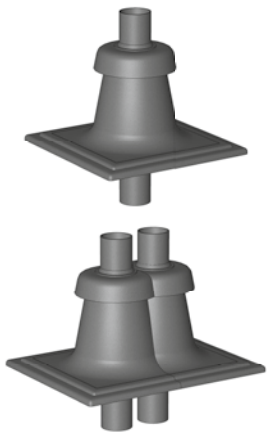
Features and benefits

- Optimal flexibility combined with maximum robustness
- Chimney calculations possible on request
- Lightweight; easy to handle and easy to shorten
- Less risk of injuries as result of sharp edges due to plastic materials
- No specialist tools needed
- Transparent material; easy to inspect during installation or with camera after installation
- Full range of products; inspection parts, adapters, terminals, extensions, bends and more



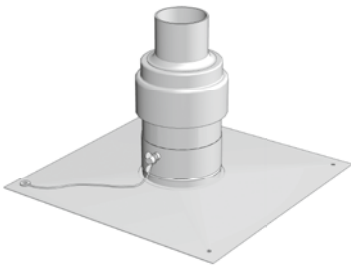
1

Terminals



PP terminal

- Complete chimney top
- For 60, 80 and 110
- Flue pipe can move up and downwards in the terminal due to temperature variations
- For 80 and 110 available as double version
- Wind angle class A45



INOX terminal

- Complete chimney top
- Outer part in INOX
- Flue pipe in UV-resistant PP or INOX
- For 60, 80, 110, 125, 160, 200, 250, 315
- Wind angle class A45

2

In the chimney

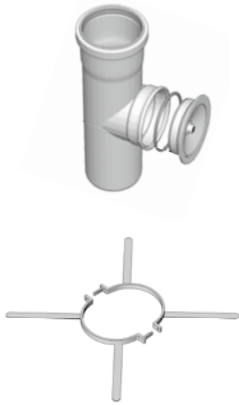


Chimney parts

- Flue pipes
- 15°, 30°, 45° and 87° bends
- Adaptors

2

In the chimney

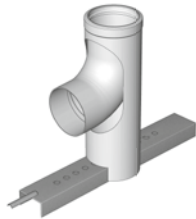


Special parts

- Inspection parts
- Spacers
 - Damage prevention during installation
 - Available for relevant diameters

3

System support

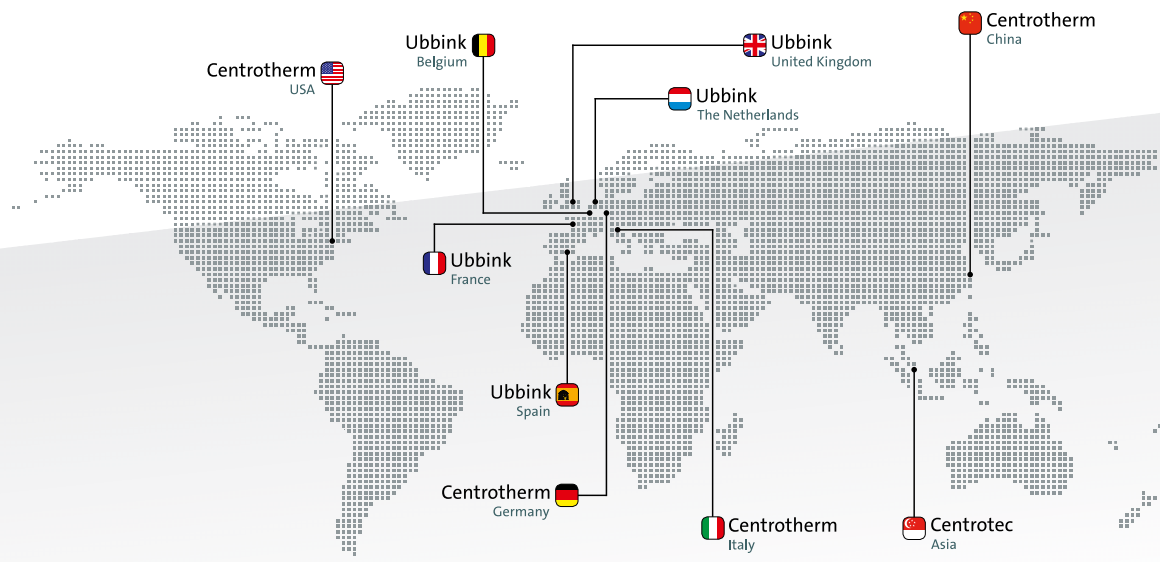


Support parts

Rigid pipes desire a firm support part at the bottom side.

- Small diameters; a metal support rail with PP bend
- Large diameters; support pipe that stands on the floor and features two gaps for a metal rail support

Ubbink Centrotherm group



- Ubbink Netherlands** www.ubbink.nl
- Ubbink Belgium** www.ubbink.be
- Ubbink France** www.ubbink.fr
- Ubbink Spain** www.ubbink.es
- Ubbink United Kingdom** www.ubbink.co.uk
- Centrotherm Germany** www.centrotherm.com
- Centrotherm Italy** www.centrotherm.it
- Centrotherm U.S.A.** www.centrotherm.us.com
- Centrotherm China** www.centrotherm-china.com

www.ubbink-centrotherm.com

© 2015 - Ubbink Centrotherm Group | Content is subject to change without notice | Availability and configurations may differ per country | UCG-2015-03-V01

